

MONTHLY MEMBERSHIP PROGRESS REPORT

District 25 E

Results as of: 11/30/2025

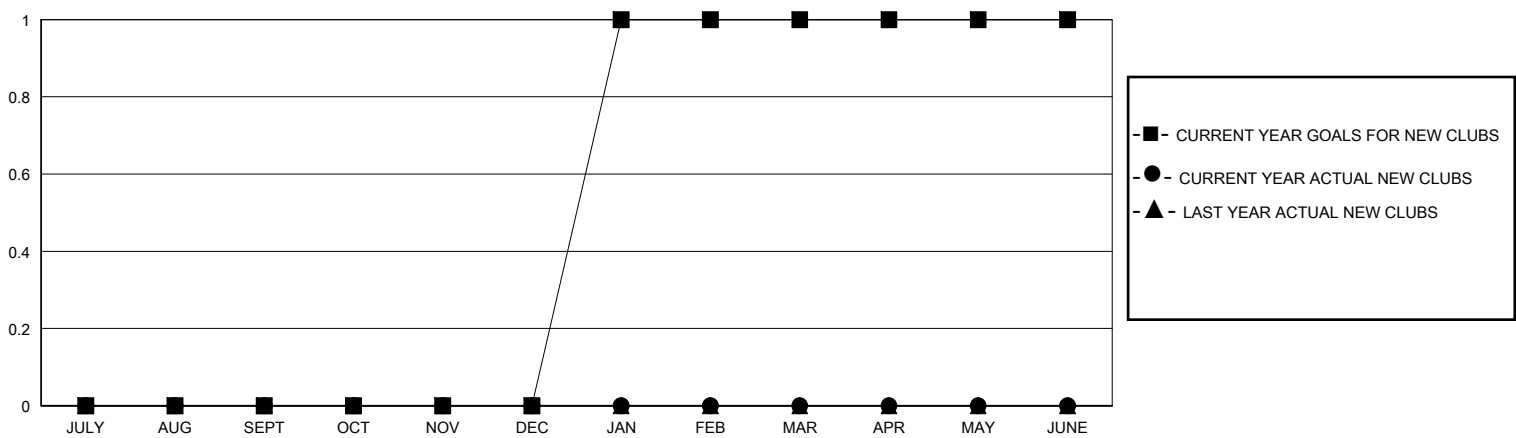
GMT:

LOCATION INDIANA

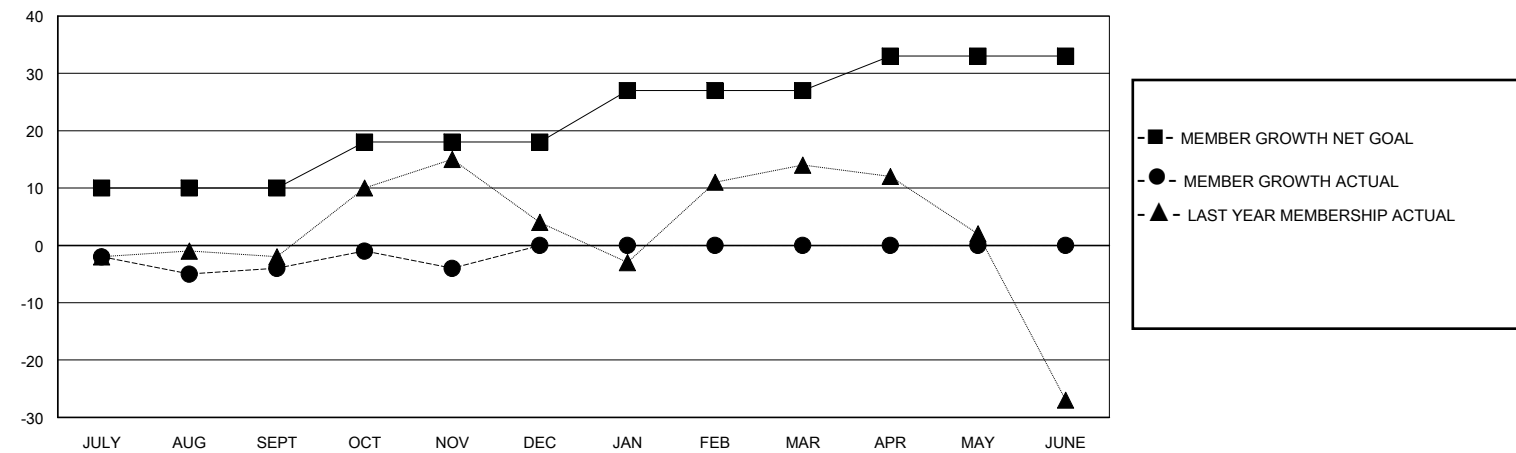
GMT CA

| Clubs | | | | Members | | | |
|-----------------------|---------------|-----------|---------------|-----------------------|------------------------|----------------------|--|
| RESULTS FOR 2025-2026 | | | | RESULTS FOR 2025-2026 | | | |
| QUARTER | NEW CLUB GOAL | NEW CLUBS | DROPPED CLUBS | QUARTER | MEMBER GROWTH NET GOAL | MEMBER GROWTH ACTUAL | DROPPED MEMBERS ACTUAL (including transfers) |
| JULY/AUG/SEPT | 0 | 0 | 0 | JULY/AUG/SEPT | 10 | 19 | 19 |
| OCT/NOV/DEC | 0 | 0 | 0 | OCT/NOV/DEC | 8 | 8 | 8 |
| JAN/FEB/MAR | 1 | 0 | 0 | JAN/FEB/MAR | 9 | 0 | 0 |
| APR/MAY/JUNE | 0 | 0 | 0 | APR/MAY/JUNE | 6 | 0 | 0 |

GOALS AND ACTUAL NEW CLUBS CUMULATIVE



GOALS AND ACTUAL MEMBERS CUMULATIVE



| | | | |
|------------------|---|---------------------------------|--------------|
| DROPPED CLUBS: 0 | 15 CLUBS OF 47 ADDED 1 OR MORE NEW MEMBERS | GENDER DISTRIBUTION | |
| | | MALE | 678 (62.26%) |
| | | FEMALE | 411 (37.74%) |
| DROPPED MEMBERS | CLICK HERE FOR CUMULATIVE MEMBERSHIP DATA | TOTAL FAMILY UNIT MEMBERS | |
| DECEASED | | 400 | |
| CLUB CANCELLED | | FAMILY MEMBERS PAYING HALF DUES | |
| OTHER | | 204 | |
| TOTAL | | | |
| | | | |